

Leman China 2022

Consensus on diagnostic criteria for PCV3-associated diseases: Are we there yet?

Fabio Vannucci

Science-driven solutions™



UNIVERSITY OF MINNESOTA

Driven to DiscoverSM



Overview

UNIVERSITY OF MINNESOTA

VETERINARY DIAGNOSTIC LAB



**SOUTH DAKOTA
STATE UNIVERSITY**

Dr. Chun-Ming Lin



Dr. Pablo Pineyro-Pineiro



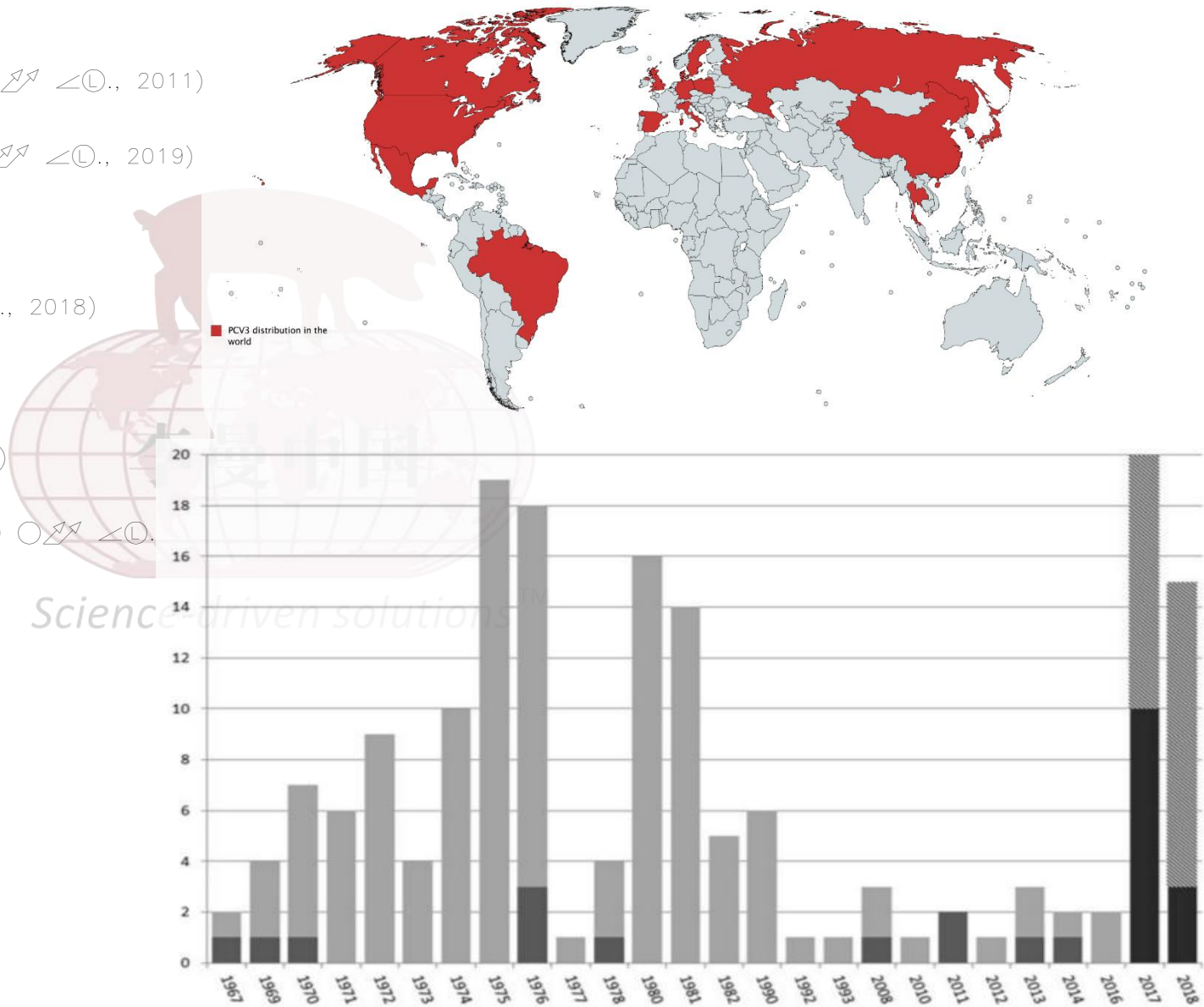
- How often do we find it?
- How often do we find it primarily associated with clinical diseases?
- What types of clinical diseases are associated with histological lesions and PCV3 detection?
- ~~How to deal with it?~~

Science-driven solutions™



How often do we find it?

- U.S, $P \square \odot \curvearrowright M \bigcirc \angle \nearrow$ 2010 ($L \equiv \bigcirc \nearrow \angle \bigcirc$., 2011)
- $T \nearrow \angle \equiv L \angle \emptyset \bigtriangleup$, 2006 ($s \text{---} \curvearrowright M \angle \curvearrowright \bigcirc \nearrow \angle \bigcirc$., 2019)
- U.K, 2002 ($c \square \bigcirc \bigcirc \equiv \emptyset \S \bigcirc \nearrow \angle \bigcirc$., 2017)
- $S \odot \angle \equiv \emptyset$, 1996 ($k \bigcirc \angle \text{---} M \angle \emptyset \emptyset \bigcirc \nearrow \angle \bigcirc$., 2018)
- $C \nearrow \equiv \emptyset \angle$, 1996 ($s \text{---} \emptyset \bigcirc \nearrow \angle \bigcirc$., 2018)
- $S \vee \bigcirc \bigtriangleup \bigcirc \emptyset$, 1993 ($\gamma \bigcirc \bigcirc \nearrow \angle \bigcirc$., 2018)
- $B \odot \angle \bigtriangleup \equiv L$, 1967 ($R \square \bigtriangleup \odot \equiv \text{---} \text{---} \bigcirc \S \bigcirc \nearrow \angle \bigcirc$., 2020)



How often do we find it?

- MN-VDL database from Feb 2016 and Jan 2018



z∇○∅ y<∅/c

S(P○□≡(M○ ∇∇+≡(P○ ∇∇+≡(P○	PCV3 (P□S≡∇∇ ≡LJ○	PCV3 ∅○/∇<∇∇ ≡LJ○	T□∇∇ <L	PCV3 ◎<∇∇ ○
T≡(S)S—○ ∇□(M□/∅○∅< ∇∇○	226	1069	1295	18→
S○◎—(M	112	371	483	23→
○◎<L //L—≡∅ P◎□∇○(S)S≡ ∅/∇ //L—≡∅	90	11	101	89→
	79	19	98	81→

PCV3

(P□S≡∇∇≡LJ○

◎<∇∇○

— S<(M(P(L○: 27→

— C<(S○: 35→

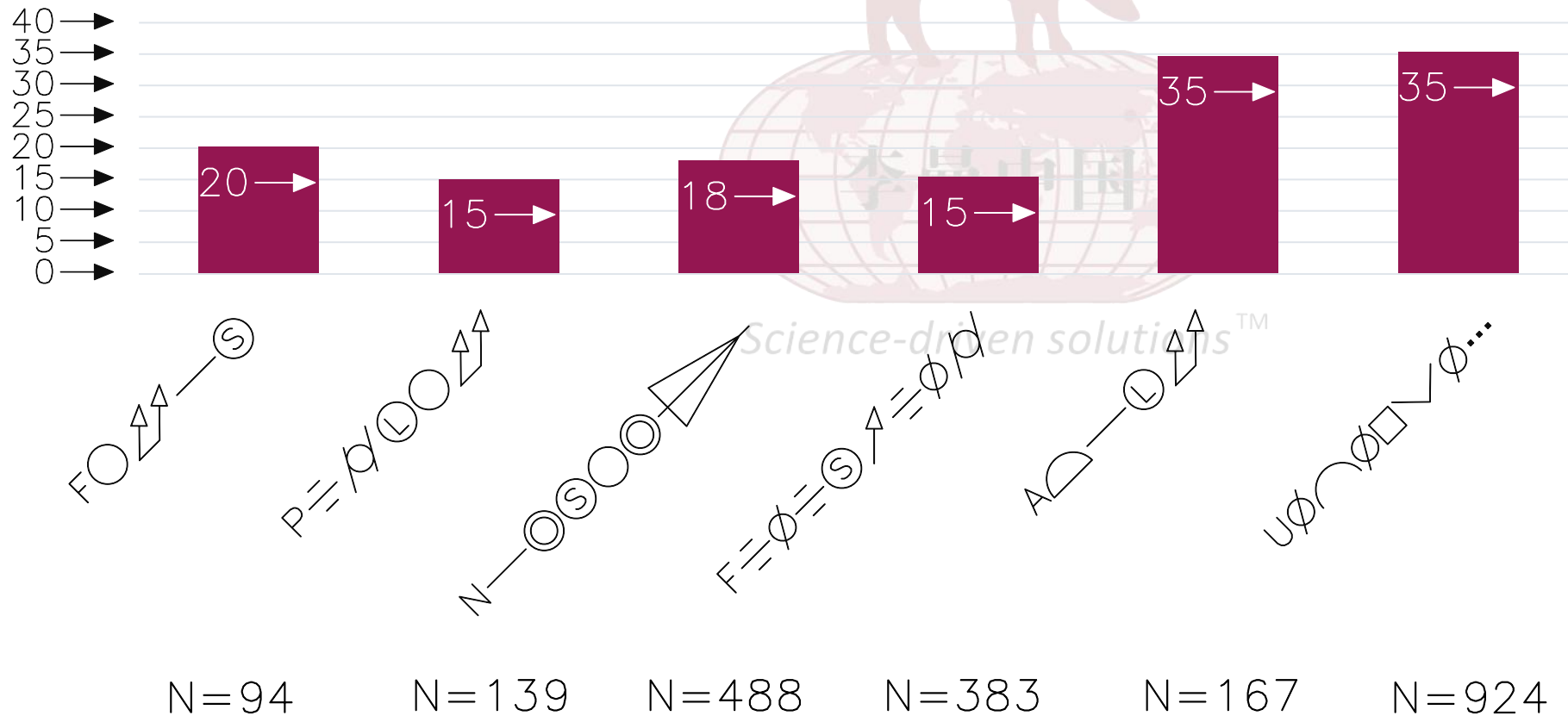
— S≡∇∇○: 38→

— S∇∇<∇∇○: 86→

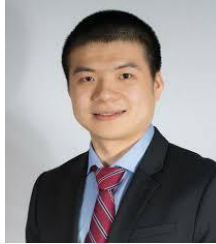


$$Z \nearrow \bigcirc \emptyset \quad Y \angle \emptyset \diagup$$

- PCV3 $(P \square S) \equiv \begin{array}{c} \nearrow \\ \searrow \end{array} \equiv \sqcup \quad \odot \leq \begin{array}{c} \nearrow \\ \searrow \end{array} \equiv \emptyset$
 $\bigcup \equiv // \quad // \quad \odot \odot \odot \emptyset \begin{array}{c} \nearrow \\ \searrow \end{array} \leq \bigcup \quad \bigcup \quad \bigcup \quad \bigcup$



How often do we find it primarily associated with clinical diseases?

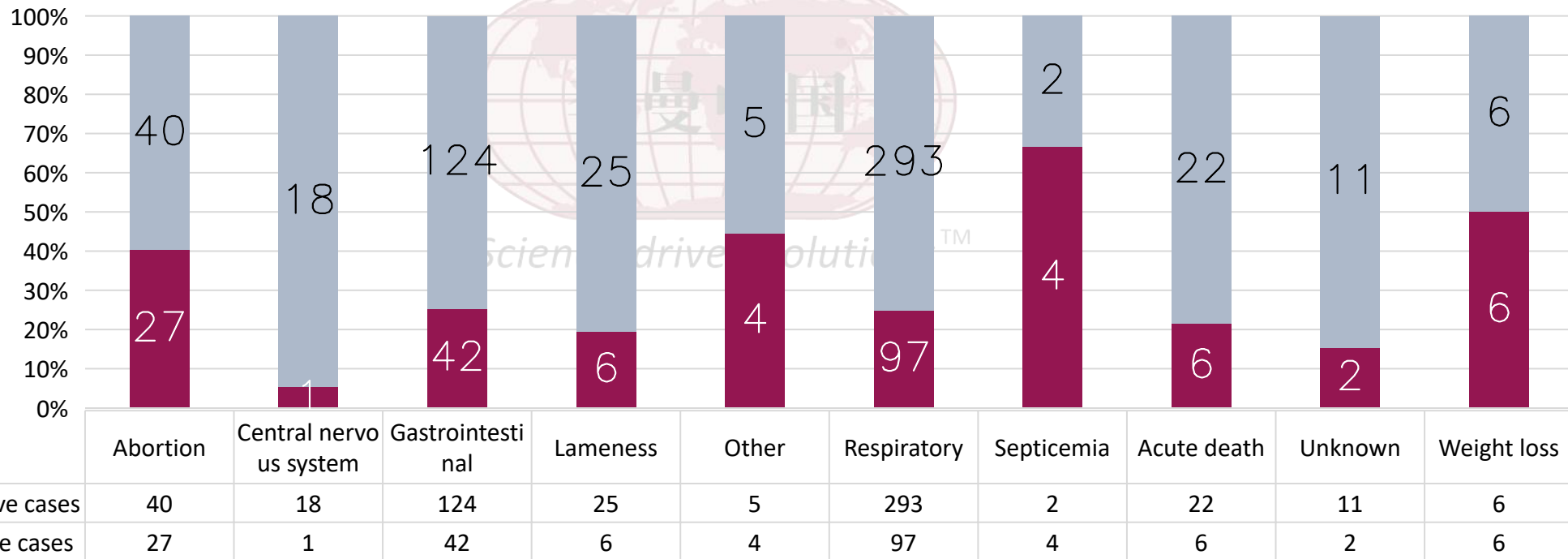


Z/O/Y

- MN-VDL database from Feb 2016 and Jan 2018

C □ (M) (P) < ⊙ = S □ ∅ □ // ▢ L = ∅ = ▢ < L (S) = ∅ ∅ (S)
 ∩ = (S) ↗ ⊙ = ⊥ — ↗ = □ ∅ = ∅ PCV3 (P) □ (S) = ↗ = ⊥ ⊙
 < ∅ ∩ ∅ ⊙ ∅ < ↗ = ⊥ ⊙ ▢ < (S) ⊙ (S)

PCV3 case positive rate



■ PCV3 positive cases ■ PCV3 negative cases



N=409
N=149

What types of clinical diseases are associated with histological lesions and PCV3 detection?

- None
- Reproductive failure
- Pre-weaning mortality
- Post-weaning wasting/mortality



science-driven solutions™



• Reproductive failure

- Increased return to estrus, abortions, mummies, stillborn
- Lowered conception rate
- Retrospective study (UofM) – n=67
 - 11 cases: PCR positive for PCV3 (only) - differentials PPV, PRRSv, PCV2
- Retrospective study (CReSA, Spain) – n=53
 - 16 cases: PCR positive for PCV3 (only) - differentials PPV, PRRSv, PCV2



What types of clinical diseases are associated with histological lesions and PCV3 detection?

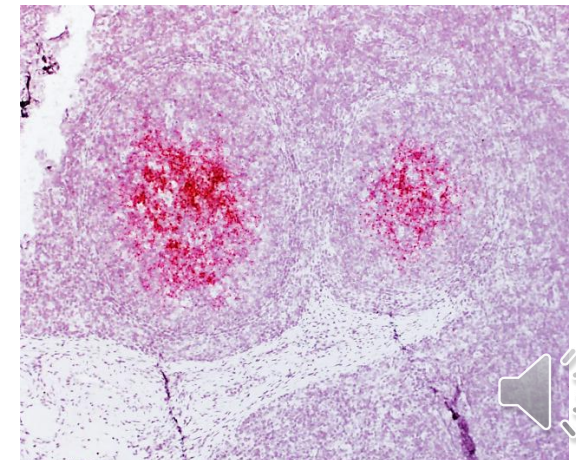
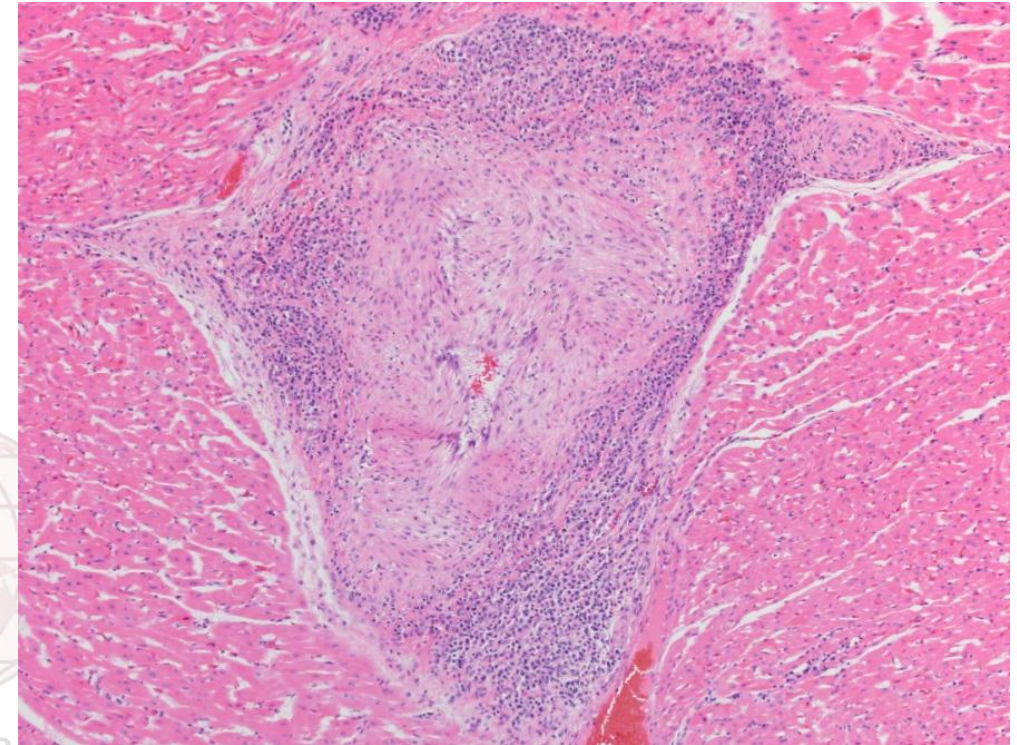
- Reproductive failure



What types of clinical diseases are associated with histological lesions and PCV3 detection?

- **Pre- and Post-weaning disease**

- Nonspecific clinical syndrome:
 - Sudden death, wasting, dyspnea, CNS
- Multisystemic inflammation
 - Vasculitis
 - Myocarditis
 - Interstitial pneumonia
 - Lymphoid depletion has NOT been a remarkable feature

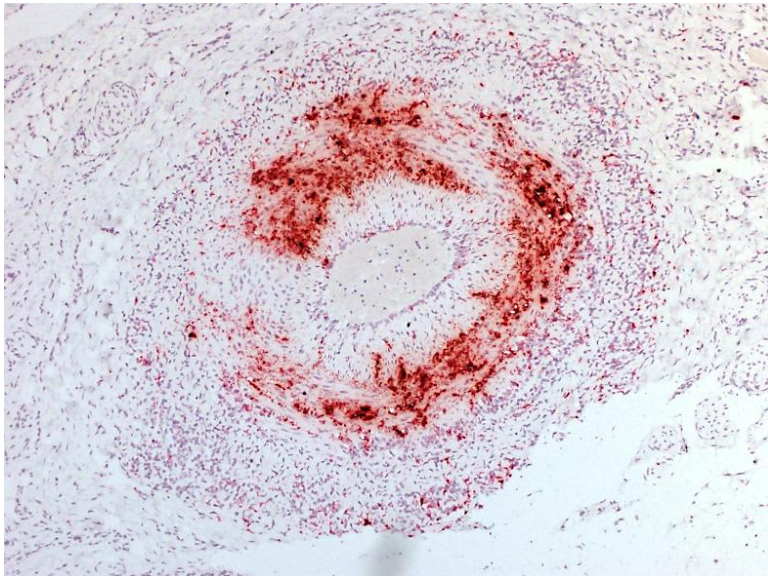


What types of clinical diseases are associated with histological lesions and PCV3 detection?

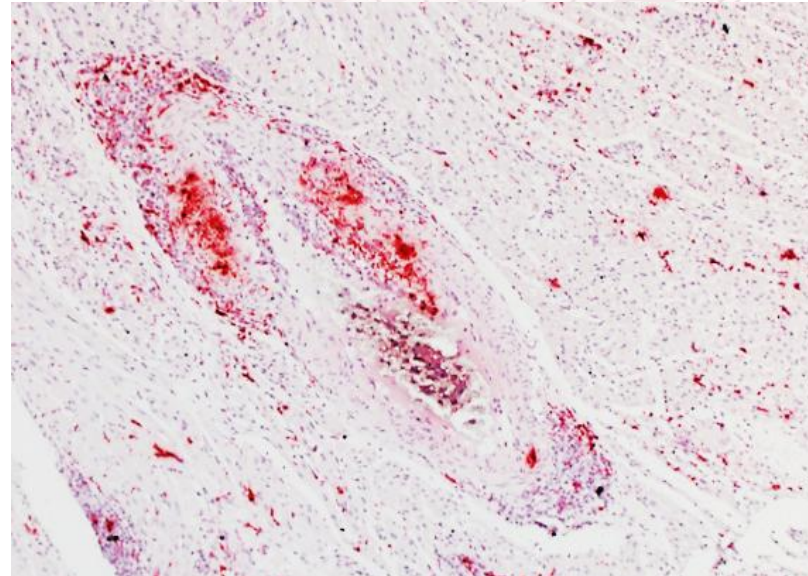
• PCV 3 detection

- PCR: duplex assay PCV2/PCV3
- *In situ* detection

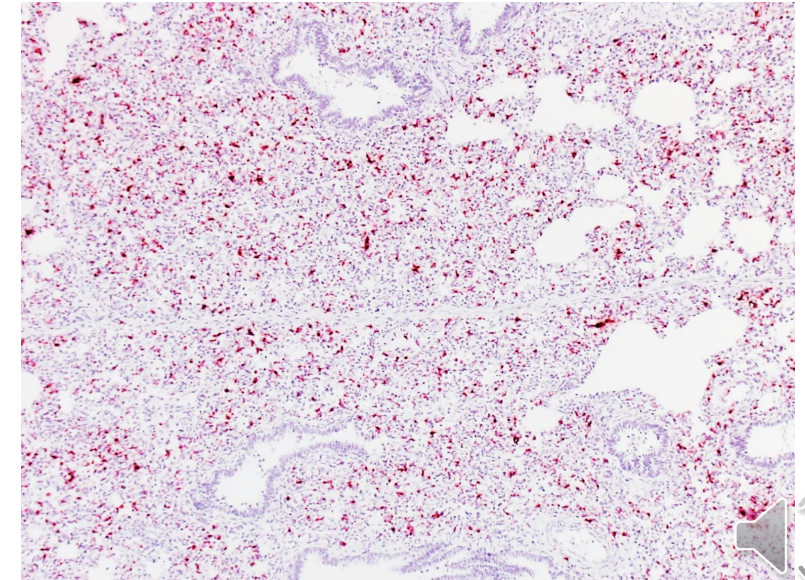
Vasculitis



Myocarditis

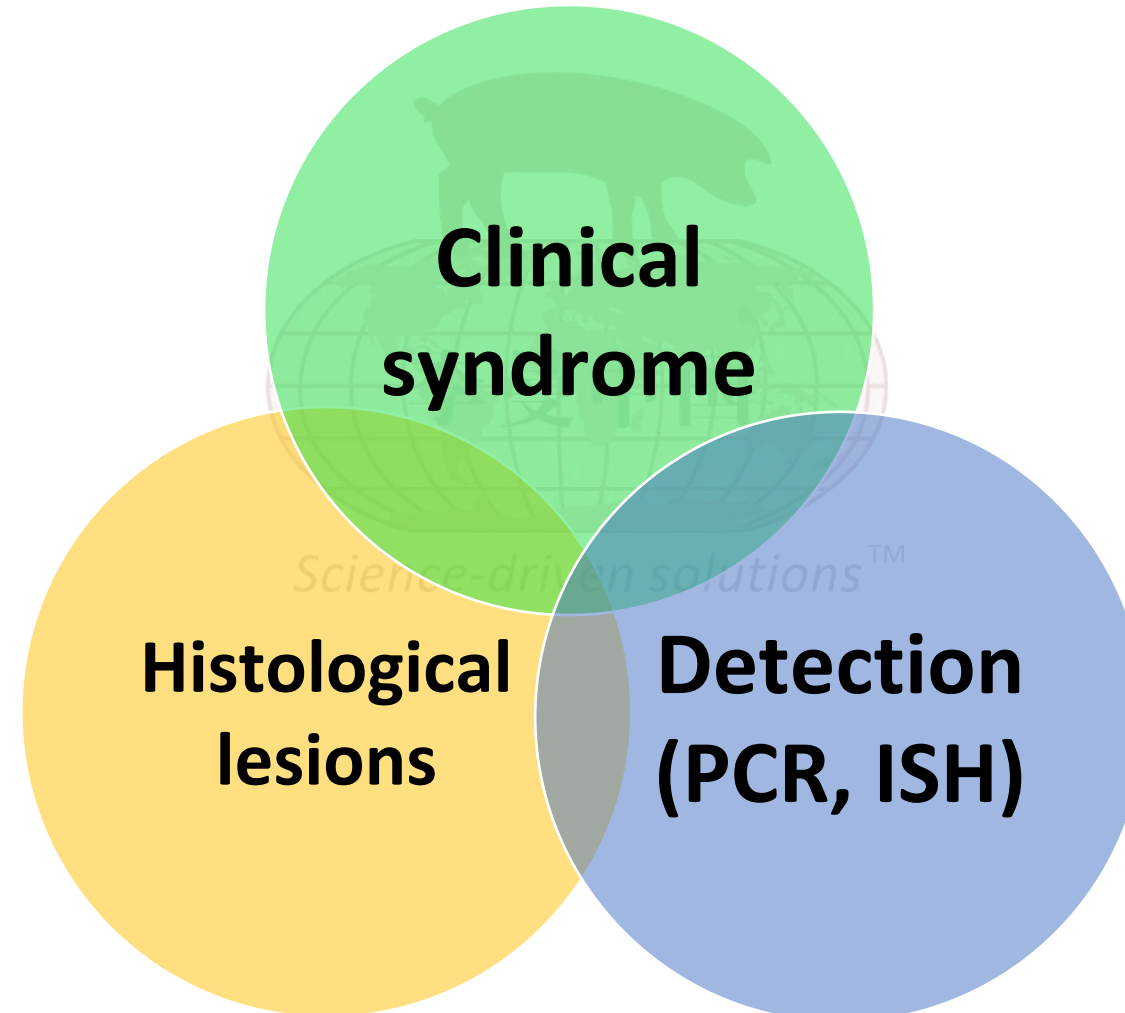


Interstitial pneumonia



What types of clinical diseases are associated with histological lesions and PCV3 detection?

- **Diagnostic criteria for case definition**



What types of clinical diseases are associated with histological lesions and PCV3 detection?

- Reality check

Reproductive failure:

Fresh fetuses
(questionable preservation)

+

Histopathology = autolysis

+

Positive PCR



How to deal with that?

- PCVs: genetic differences

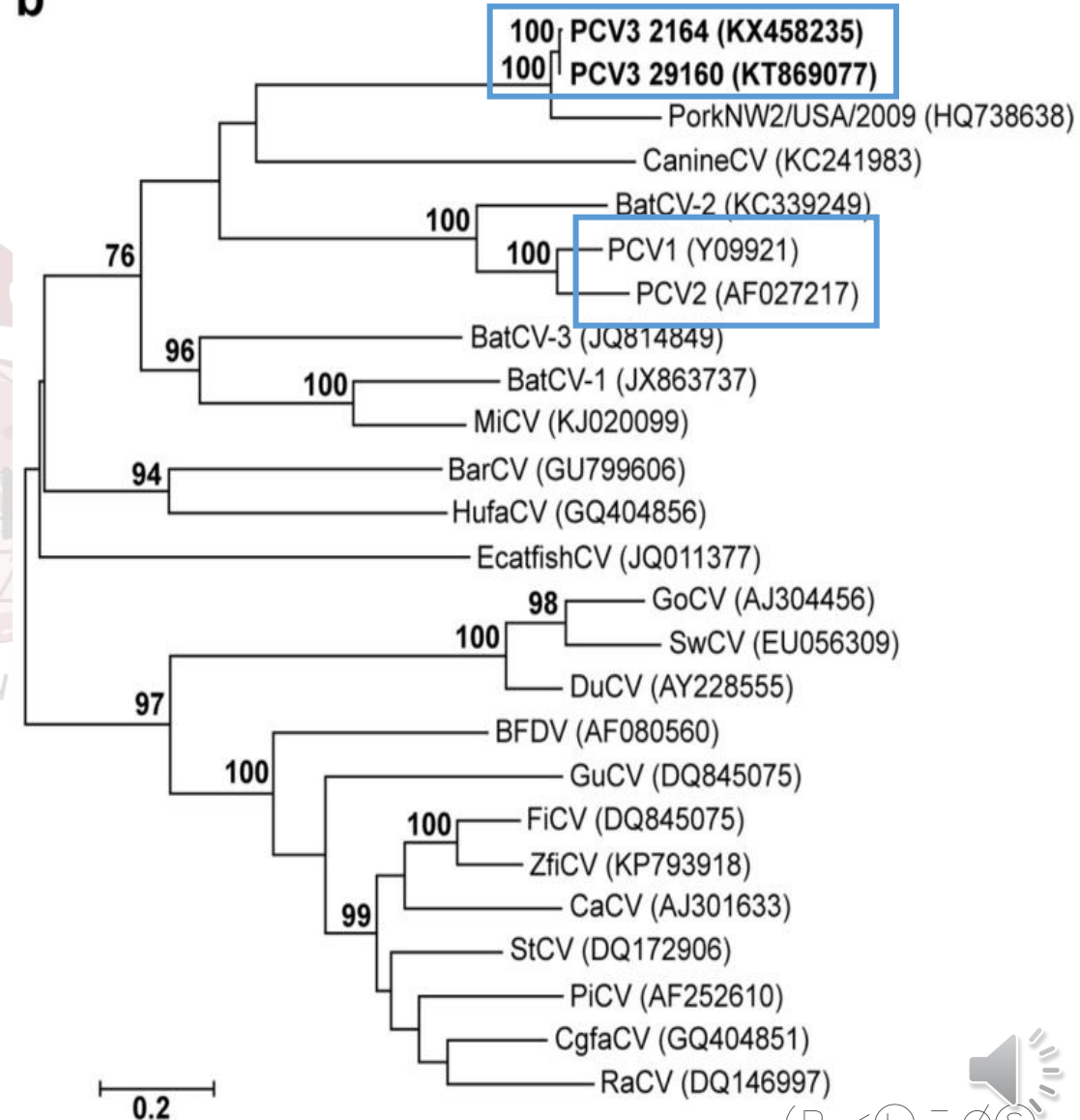
- Principais proteínas

- *cap* (ORF2)

PCV1 and PCV2 → ~68%

PCV2 and PCV3 → ~35%

b



Take home messages

- How often do we find it?
 - Endemically
- How often do we find it primarily associated with clinical diseases?
 - Sporadically
- What types of clinical diseases are associated with histological lesions and PCV3 detection?
 - None, reproductive failure, pre- and post-weaning wasting/mortality
- How to deal with it?
 - Not vaccinating for PCV2



Science-driven solutions™

